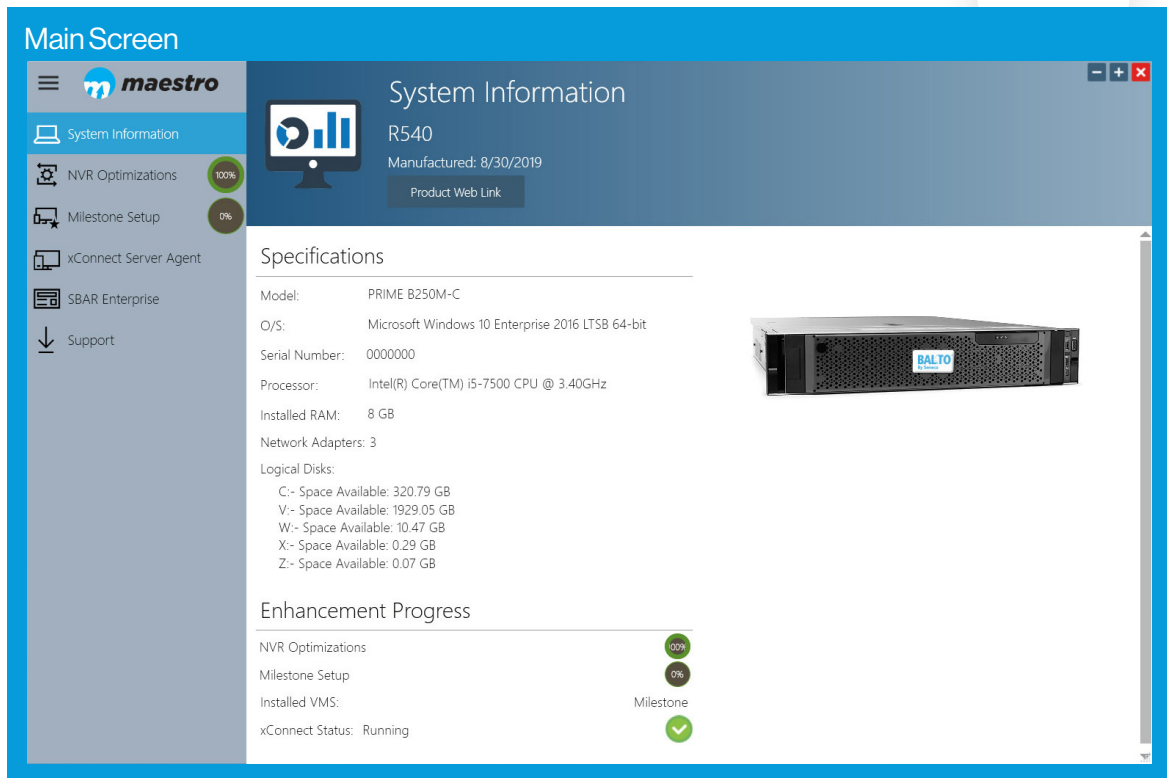




maestro

Optimization realized

Our innovative Maestro software orchestrates configuration and setup to get your Balto solution up and running in minutes instead of hours. We channeled years of value engineering into an intuitive dashboard that eliminates hundreds of keystrokes. We've worked with Milestone to ensure your system includes the latest software versions for Maestro to optimize. No internet connection or data transfer required!



Purpose-built by Seneca, the industry innovators, Maestro transforms your server into a true security appliance in under 30 minutes. It comes optimized for Milestone and support is just a click away.

Maestro comes pre-installed and ready-to-use on all Balto NVRs.

KEY FEATURES



**SAVES
300+
KEYSTROKES**



**ONE CLICK
NVR
OPTIMIZATION**



**SENECA
BACKUP
& RECOVERY**



**DEVICE
MAINTENANCE
DASHBOARD**



**IMMEDIATE
REMOTE
SUPPORT**

xCONNECT
Remote Management Platform



milestone

AVI