

# **DIGITAL SIGNAGE QUICK START GUIDE**

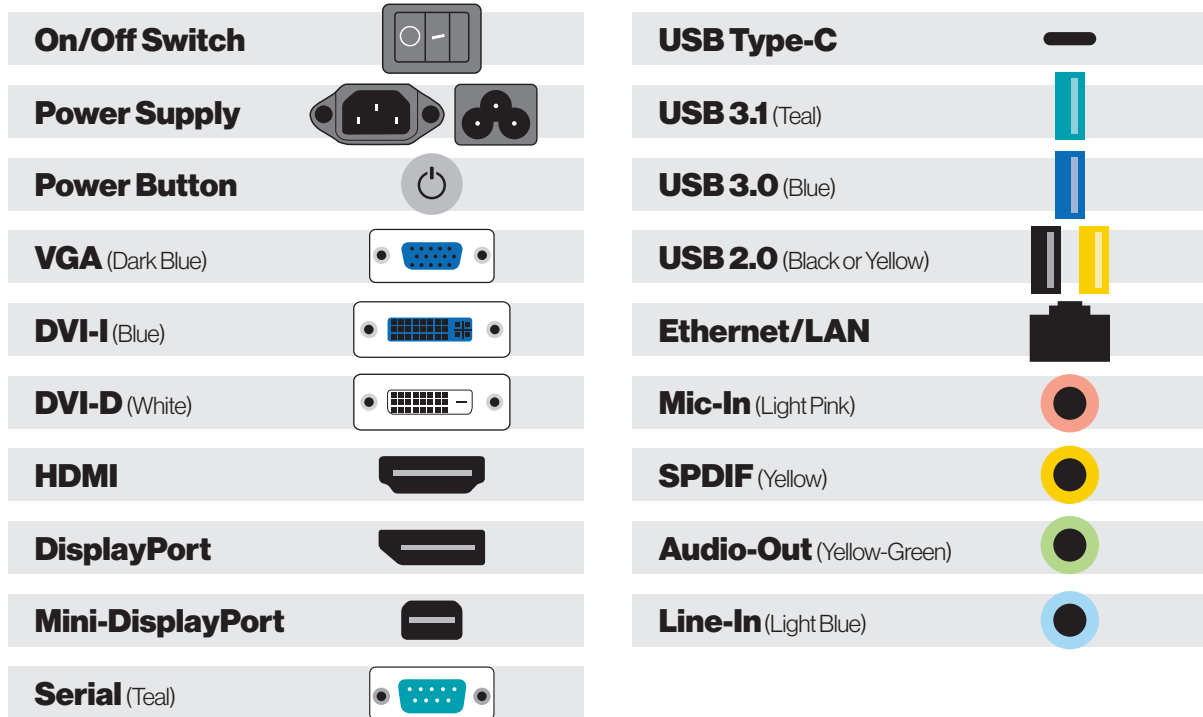


Congratulations on the purchase  
of your Seneca media player.

Please retain this quick start guide as a reference for basic setup and support.

# WELCOME

Seneca Media Players are exclusive purpose-built digital signage appliances designed for mission critical performance ranging from single display signage to dynamic 4K video walls. Powered by industry leading processors and an array of high-performance graphics cards, Seneca media players combine performance and ease of use into one dynamic platform.



## CONTENTS OF PACKAGE

Quantity	Item
1	Seneca Media Player
1	Power Cable / Power Supply

## OPTIONAL CONTENT

Quantity	Item
1	Mouse and Keyboard
1	Miscellaneous GPU adapters (Varies upon GPU options selected)

## INSTALLATION

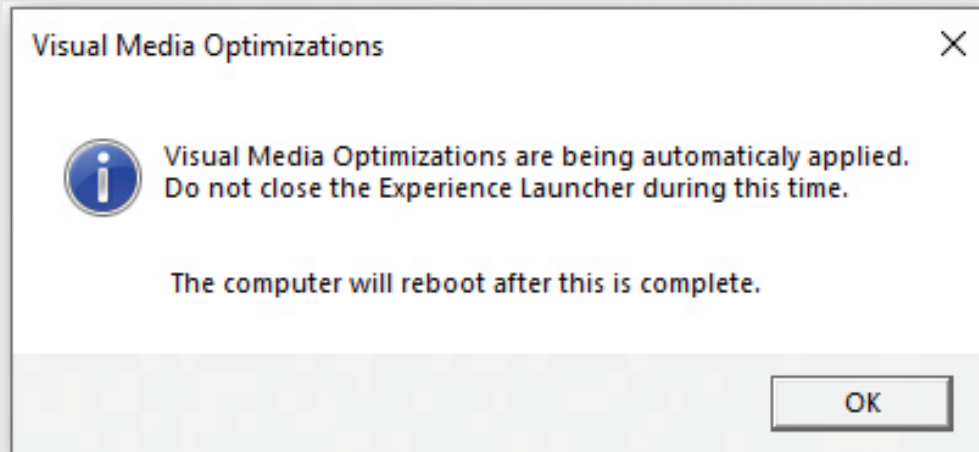
Setting up your system is fast and easy.

1. Plug in mouse, keyboard, display and power cable and boot system normally.
2. Follow the Maestro setup information on the next page...

# SETUP

## First Boot:

- Accept Windows EULA: Windows will begin its setup process, which will lead you your windows desktop background, at which point you will be greeted by the Seneca Maestro application and click OK as Maestro processes Visual Media Optimizations.



- Once optimizations are completed, your system will restart.

## Second Boot:

- After your system has rebooted, log in and navigate to the “Maestro Icon” on your desktop and open the application.
- On your left-hand control panel within Maestro, you can now begin the installation of your software.
- Once Software installation is completed, please navigate to the xConnect tab within Maestro. (see xConnect quick-start guide.)
- Upon completion of your Seneca integration, it is advisable to create a system backup on recovery media using SBAR, Seneca’s backup and recovery tool.\*

*\*Incremental backup only available with SBAR Enterprise*

# SBAR

Seneca Backup and Recovery System

## BACKUP WITH RECOVERY MEDIA

**This Quick Start Guide describes the use of the Seneca Backup and Recovery product.**

### Requirements

- Computer with Seneca Backup and Recovery (SBAR) installed on it from the factory.
- A USB Flash Drive or USB Hard Drive needed to create your factory recovery media.

Important Notes:

- The USB Flash Drive will be formatted during the process so make sure you have your data backed up before. There will also be a warning to let you know it will be formatted during the Factory Recovery Media creation process.
- The USB Hard drive the partition on the drive will be shrunk and a bootable partition will be created at the end of the drive.

Follow these steps:

- a. The USB hard drive will need to be formatted to match your internal hard disk format.
- b. For Windows 10 that is set to **UEFI** boot in the system BIOS (default setting from most manufacturers), you will need your external USB drive to be formatted GPT. If your system is set to boot **Legacy** in the BIOS, then you need to have your external USB Hard drive formatted MBR. This is so the system will be configured correctly to boot in the event you need to boot to your Recovery Media and restore your Factory Image to the existing or new internal hard disk.
- c. In Summary:
  - i. UEFI boot in the BIOS → GPT formatted USB Hard Drive required
  - ii. Legacy boot in the BIOS → MBR formatted USB Hard Drive required

### Starting Seneca Backup and Recovery

1. Click on the up arrow in the systray area to see the application that is running.
2. Here you will see the S icon, double click on it or right click on it and you can select to create your "Recovery Factory Media".

### Creating Recovery Media on an External USB Hard Drive

1. Open the application as outlined above and connect the USB Hard drive to the system and you will see the hard drive appear.
2. Click on and highlight the drive and then click "Continue" Click "Yes" to start creating the Factory Recovery Media
3. You will see when the process starts to initialize the disk.
4. Once the drive has been prepared, the process will copy the Factory Image to the USB Hard drive.
5. Once the process is complete you will see a screen that requires you to click "OK" and the application will exit.
6. That's it, you have created your factory recovery media on to a USB Hard Drive.

### Creating Recovery Media on a USB Flash Drive

1. Open the application outlined above and connect the USB flash drive to the system and you will see the drive appear.
2. Click on and highlight the drive and then click "Continue"
3. Warning: The drive will be formatted as you see on the screen. Make sure you have your data before continuing. Click "Yes" to start creating the Recovery Media.
4. You will see when the process starts to initialize the disk.
5. Once the drive has been prepared, the process will copy the Factory Image to the USB flash drive.
6. Once the process is complete you will see a screen that requires you to click "OK" and the application will exit.
7. That's it, you have just created your factory recovery media on a USB Flash Drive.



*Seneca Backup and Recovery System*

# RECOVERY

## Restoring with Data Backup

To Restore your system hard drive back to the Factory Image:

1. Boot to the Factory Recovery Media drive you created.
2. Reboot your system to the BIOS boot screen, check your user's manual to find the proper function key to press during POST.
3. Select to boot to the drive your Factory Recovery Media was created on.
4. Once the drive has booted to the Factory Recovery Media, you will see the Backup and Recovery screen.

Note: if you do not have any data to backup, you can click on skip to go right to restoring your Factory Image

To back up your data before restoring the system back to Factory, click "Next" and data backup screen will appear

Select the data you want to back up by placing a check mark next to the file or directory you want to backup. Click "Next" once you have selected all the files you would like to backup and are ready to continue.

The System Recovery screen will appear as your system backs up the data you selected.

Once the data has been backed up then the process will continue to prepare your hard disk.

Once the Factory Image has been restored to your hard drive and is complete you will see the screen for restart.

Just click on Restart and the system will reboot and start windows.

Your Factory Image recovery is complete.

# SUPPORT INFORMATION

Should you encounter any issues or need further assistance, please contact our support team:

US Business Hours

**800.227.3432 option 5**

Available Monday–Friday 8am–6pm EST

EMEA Business Hours

**+44 1638 569 622**

Available Monday–Friday 8h-18h CET

E-mail

**SenecaCustomerCare@arrow.com**

**senecatechsupport.emea@arrow.com**

For additional support, please visit our support site at:

**senecadata.com/support**



\*VM-QSG-TRI-V1\*

**ARROW**

v1.08.17.21