

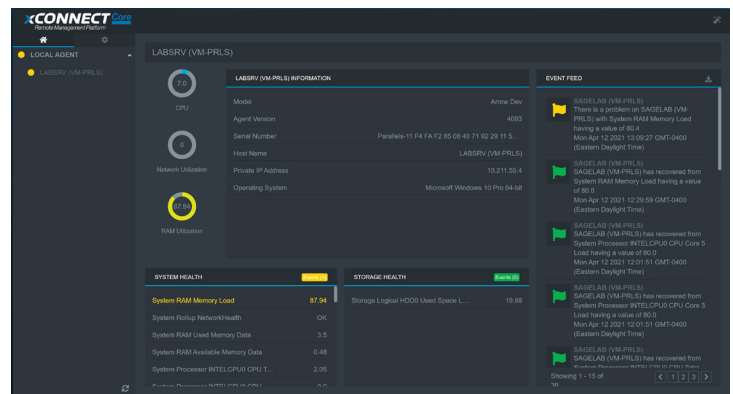
Seneca's innovative xConnect Core platform puts you in complete control of your security hardware with an easy-to-use dashboard that allows you to monitor your system remotely. Purpose-built for physical security, xConnect Core lets you easily monitor system health, environment characteristics and performance utilization to ensure the system is performing as intended with maximum uptime.

xCONNECT Core

Remote Management Platform

STANDARD AND PRE-INSTALLED
ON ALL SENECA SERVERS

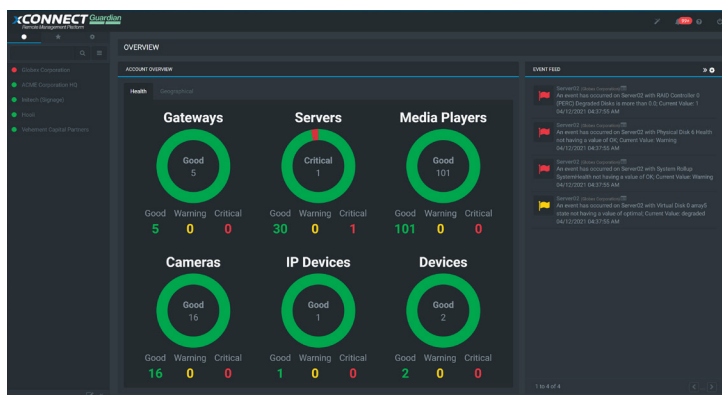
xConnect Core is provided as part of the offering with all Seneca storage servers and allows monitoring systems within a single site all connected within the same network (LAN). xConnect Core provides a local dashboard to monitor systems and email alerts to respond proactively to any potential issues.



xCONNECT Guardian

Remote Management Platform

AN UPGRADE FOR SIMPLE ECOSYSTEM MANAGEMENT



xConnect Guardian is an enhanced service offering that expands the capabilities to monitor multiple systems and multiple sites within the same user dashboard. xConnect Guardian provides a web-based dashboard, email notification, remote desktop and ecosystem management within a virtual gateway. With xConnect Guardian, you get all the advantages of xConnect Core with much more ...

| FEATURE | xCONNECT Core Remote Management Platform | xCONNECT Guardian Remote Management Platform |
|-----------------------------|--|--|
| Local Device Telemetry | ● | ● |
| Multi-Device LAN Monitoring | ● | ● |
| Local Dashboard | ● | ● |
| Email Notification | ● * | ● |
| IP Peripheral Status | ● ** | ● |
| Web Dashboard | - | ● |
| Multi-Site Monitoring | - | ● |
| Remote Command | - | ● * |
| Remote Desktop | - | ● |
| Ecosystem Management | - | ● |
| API integration | - | ● ** |
| XC vBridge Virtual Gateway | - | ● |

*Must have local SMTP server
**Devices MUST be on LAN

*Remote command feature available. User responsible for execution.
Available as paid service

**API integration feature available. User responsible for integration
Available as paid service

ADD-ON OPTIONS

*xConnect Onboarding Package:

Live training seminar with a dedicated Seneca Engineer. Fast-track your team to harness the power of xConnect in a single session. Our experts provide a guided tour of function, best practice and setup to ensure ease of adoption in your organization.

The xConnect Onboarding Package includes:

- Initial setup and core functions
- Adoption of key features
- Application best-practices
- Event-reaction scenarios
- Recording of session for future training

*xConnect 1hr virtual engineer

Focused 1 hour training with a dedicated Seneca Engineer on a topic of your choice.